

# WORKSTEAD



**PARK II**  
white enamel

# WORKSTEAD



**PARK II**  
black enamel

# WORKSTEAD

## PARK II

hardwired

### Description

The PARK II incorporates a domed hand-blown milk glass shade atop a slender enameled base. Referencing porcelain fixtures of the pre-war period, the iconic sconce has an integrated dimmer knob, for a tactile experience. Features an integrated dimmer knob. Made in the USA. UL Listed. Damp Rated upon request.

### Finish Options

White Enamel  
Black Enamel  
Brushed Aluminum

### Dimensions

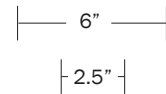
Overall Height - 18"  
Glass Width - 6"  
Fixture Body Width - 2.4"  
Depth - 5"

### Weight

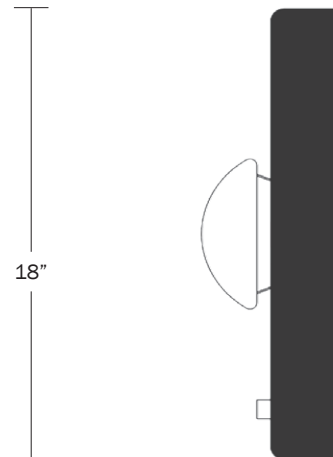
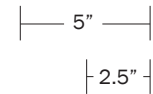
3 lbs

### Lamp

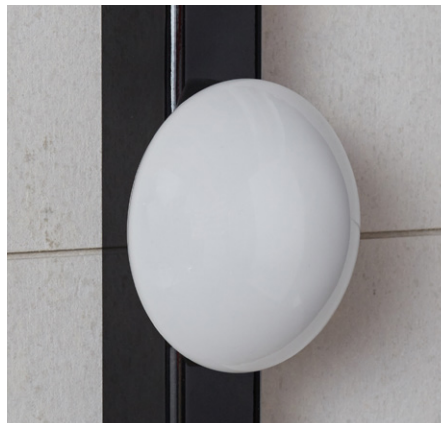
60 Watt Incandescent Max  
4.5W Screw Base  
Dimmable LED Bulb Included  
40 Watt Equivalent  
300 Lumens  
2700K Color Temperature  
Bulb Life 35,000 Hours  
110/120V, E26  
220/240V, E27  
UL/CE Listed  
Requires 2"x 4" Single Gang Junction Box  
Custom Backplate Extensions Available  
Damp Rated Upon Request



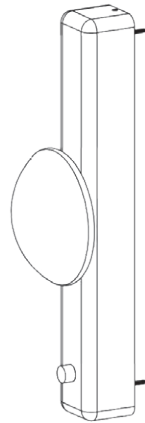
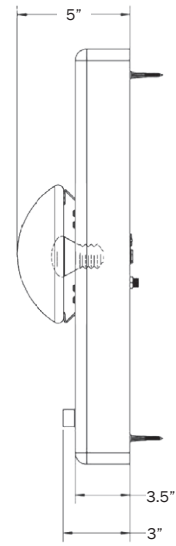
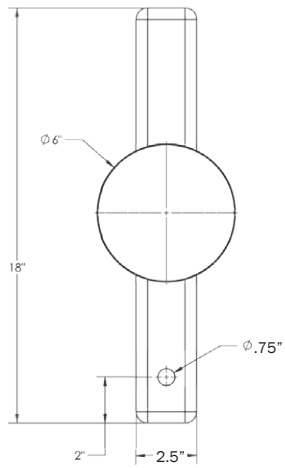
front



side



# WORKSTEAD



# WORKSTEAD

## PARK II ALTERNATE BACKPLATE

